

# Quickstart Guide

## BWT Pearl Water Manager

(optional)

A Wi-Fi extender may be necessary for proper communication.

**Mandatory characteristics:**

- 2.4Ghz IEEE 802.11b/g/n
- WPA/WPA2 security

**Recommended configuration:**

Use a different network name for the repeater network to differentiate from your router. Repeater with WIFI IEEE 802.11 b active.

Manage  
pH  
Chlorine  
Temperature



bwt.com



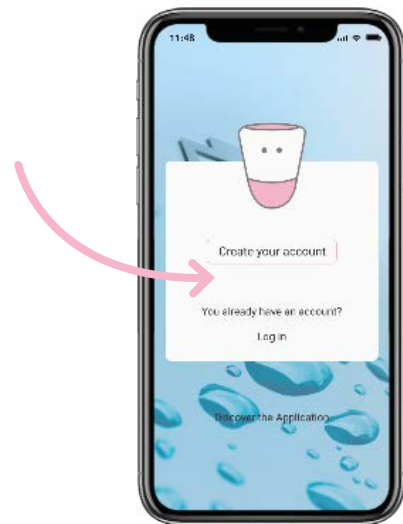
bwt.com

1

2

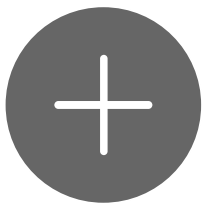


BWT Pearl Water Manager

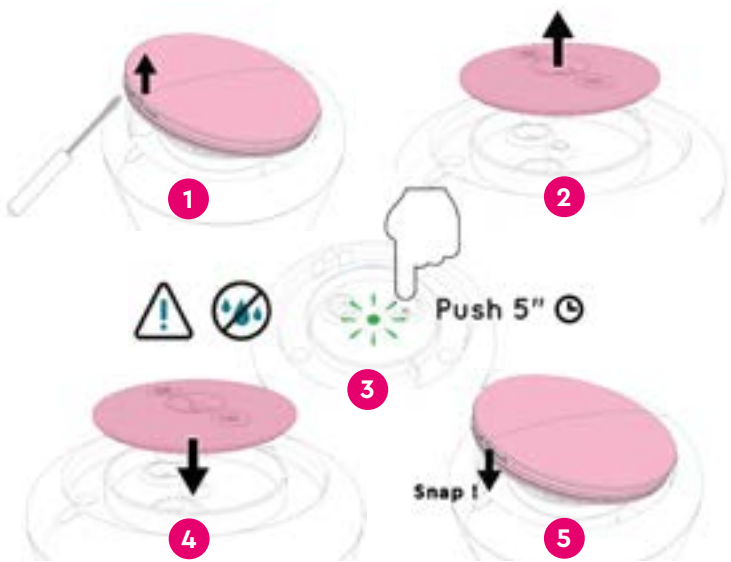


3

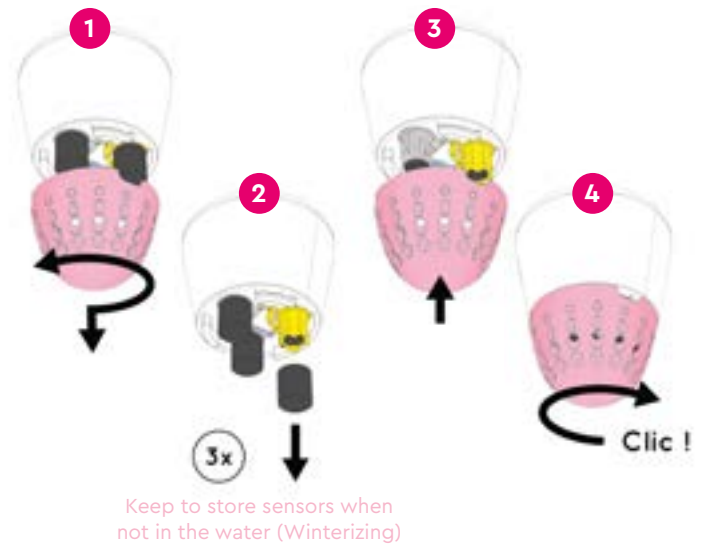
4



# 5



# 6



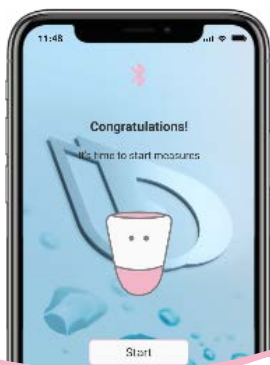
# 7



# 8



# 9



Please allow 3 minutes for first reading

1H

Readings are re-calculated every hour



You will receive your first recommendation alert within 24 hrs

Any question?

[www.bwt.com/pearlwatermanager](http://www.bwt.com/pearlwatermanager)



Watch the video on YouTube



BWT Holding GmbH  
Walter-Simmer-Str. 4  
5310 Mondsee - Austria